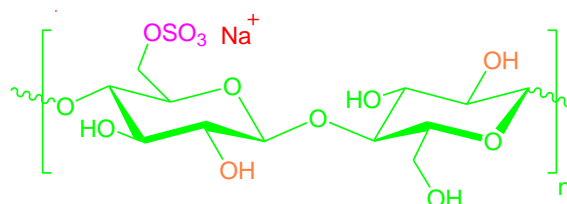


# Product Specification

<b>Product Name</b>	Sodium Sulfated Cellulose Sodium Salt of Sulfated Cellulose Sodium Cellulose Sulfate
<b>Product Number</b>	201300
<b>CAS Number</b>	9005-22-5
<b>MDL</b>	-
<b>M.F.</b>	$C_{12}O_{13}SH_{19}Na$
<b>M.W. (Repeat Unit)</b>	426.32 g.mol <sup>-1</sup>
<b>Compound CID</b>	86574936
<b>Storage Temperature</b>	2 – 8 °C
<b>Manufacture Date</b>	



Test	Specification
<b>Appearance (Form)</b>	Microfiber
<b>Appearance (Color)</b>	White
<b>Degree of substitution</b>	0.5 – 0.6 (2.1 – 2.2 mmol.g <sup>-1</sup> )
<b>Infrared spectrum</b>	Corresponds to reference spectrum
<b>Purity (Titration)</b>	≥ 98 %
<b>Solubility</b> (Water) (Common organic solvents)	Insoluble Insoluble
<b>pH</b> (Water, swollen)	6 – 7
<b>Recommended Retest Period</b>	180 days